

Commercial Raised Panel Steel Sectional Doors

Manufactured with
Exclusive RITS™ Design

MODEL CRP24 SP & CRP23 VP



CRP24 SP shown with optional Stockton lites

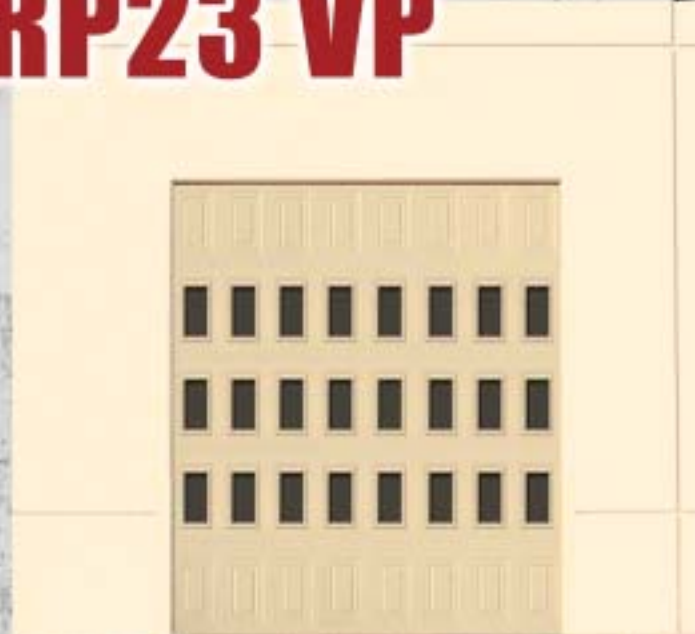
First United Door Technologies is first with innovative and exciting raised panel doors that are right for many commercial applications. The CRP24 SP and CRP23 VP Commercial Raised Panel doors have a style true to traditional paneled wood doors with deep embossments, woodgrain texture and the trim style of vertical panels on the VP.

Along with the distinct look, combine these benefits — the strength and light weight of steel, the exclusive RITS™ reinforced integral truss system, and flexible door lite configurations allowing more or less ambient light.



From the east to the west coast, these unique commercial doors work where ordinary doors just won't. It's another great product from a company that is

"Passionate about garage doors."



CRP23 VP shown with optional Plain View lites
(All doors are pre-painted white and ready for post-painting.)



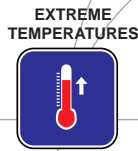
7255 S. Kyrene, Suite #104 • Tempe, Arizona 85283
Phone: 480-705-6632 • Fax: 480-705-8497

Our Passion Is Garage Doors

Model CRP23 VP & CRP24 SP

Commercial Raised Panel Steel Sectional Doors

Manufactured with Exclusive RITS™ Design



SPECIFICATIONS

FEATURES

- Exclusive RITS™ "Reinforced Integral Truss System" design, for increased section strength and wind-load capabilities that include tongue and groove weather resistant meeting rails.
- 2-inch thick sections are pre-finished with a two-coat white polyester paint system inside and out.
- Matching white center and end stiles are bonded vertically with an epoxy based cement, and then riveted to the RITS™ meeting rails for maximum strength and durability.
- 2-inch ten ball NYLON rollers are standard to ensure quietness and increased door life.
- Inside lock is an industrial spring loaded combination dead bolt and D-ring handle. Derby pull rope is 1/2" blue.

PRODUCTS

Steel door sections are formed from 23 or 24 gauge hot-dipped galvanized steel. Sections are 2-inches thick, with an oven baked two-coat white polyester paint on both the exterior and interior surfaces. End stiles and center stiles are made of 18 gauge hot-dipped galvanized steel, pre-painted white to match the color of the sections (16 gauge galvanized steel optional). Each section is embossed with raised panels and woodgrain texture. The stiles are riveted to the tongue and groove meeting rails and bonded at 8 separate locations to the face of the section with a high impact/tensile strength adhesive. Each section is roll formed with the RITS™ "Reinforced Integral Truss System" design to enhance the section's strength and the door's overall wind-load capabilities. The bottom section is reinforced with an aluminum bottom retainer and support a 3-1/2 inch (5-inch optional) replaceable "U" type vinyl bottom weather seal.

TRACK AND HARDWARE

All track and hardware components are made from galvanized steel. Hinges are a minimum 14 gauge steel. Nylon ten ball rollers are used with 2-inch track. Doors that require 3-inch track will use steel (Nylon optional). 2-1/4 or 3 inch truss bars are used when door weight and width dictates their use, or as an optional upgrade for added strength. All fasteners are zinc plated and self-locking. Horizontal tracks are 2 or 3-inch and reinforced with a full length 1-1/2 or 2-inch horizontal angle. Vertical tracks will be either bracket mounted, or angle mounted to accommodate standard lift applications (high lift, vertical lift, low headroom or roof pitched type applications are optional). The inside lock (thru lock optional) is a heavy duty thru-bolt lock with a spring loaded D-ring handle, 1/2 inch pull rope and 4-1/2 inch step plate are standard.

COUNTERBALANCE

Torsion springs are oil tempered spring wire engineered and calibrated to meet a minimum of 10,000 cycles (high cycle springs optional). The torsion springs are mounted on either a 16 or 14 gauge galvanized torsion tube or a solid steel shaft depending upon door weight and size. Galvanized aircraft cable with a safety factor of seven-to-one is used in connection with the appropriate cable drums.

OPTIONS

Insulation: Expanded polystyrene (EPS) 1.625 nominal thickness with an R-factor 7.35 available with a laminated high impact vinyl back skin or 26 gauge pre-painted white steel back skin.

Glazing/Lites: Window sizes of 20x14 (SP) or 14x20 (VP), are available in an insulated or uninsulated frame and windows in Stockton or Plain View Designs. Exhaust ports are available as a factory installed option.

Weatherseals: Optional 5-inch "U" bottom seal and "Ultimate™" seal for the bottom section are available to seal most floor irregularities. Reverse angle seal and top section seal are available to seal the perimeter of the opening on steel or concrete jambs. Vinyl stop is used on doors with wood jambs.

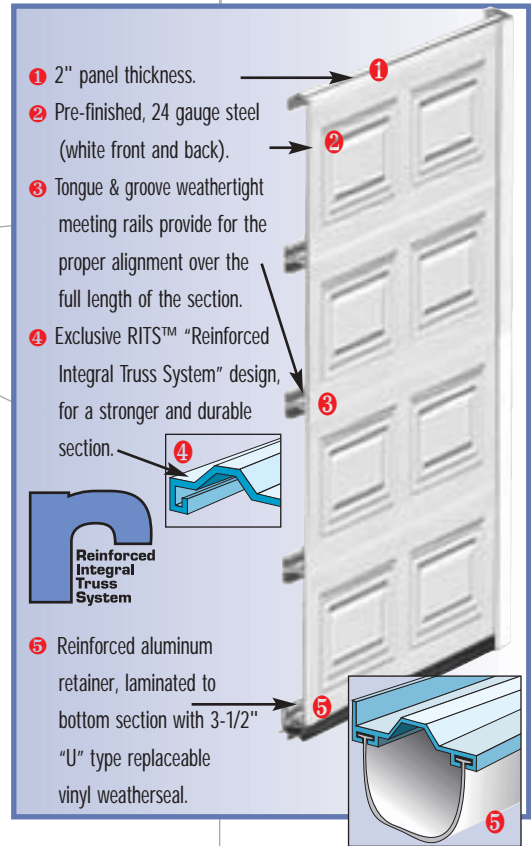
Hardware/Locks/Track/Springs: Vertical lift, high lift, low headroom or follow-the-roof-pitch are optional track configurations. High cycle springs in increments of 25K, 50K, 100K are optional. "T" handle thru-lock with double snap latches or 5-pin tumbler/cylinder lock with lock rod are available as optional locking devices.

Electric Operators/Chain Hoist: Direct drive and reduced drive chain hoists are available. Electric drawbar or jackshaft operators in various voltages of 110V, 220V, and 460V are available as well as radio controls, electric safety edges, and light beams as additional options.



08 36 13/FIR
BuyLine 4566

McGraw Hill
CONSTRUCTION Sweets



APPLICATION

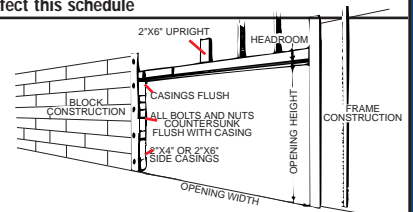
Headroom Schedule		Panels and Sections Schedule*			
Standard Lift Headroom Requirement		Panels Wide		Sections High	
2" Track	3" Track	Width	No. Panels	Sections	Height
15"	18"	to 9'11"	2	5	to 8'1"
15"	18"	10'0" to 14'0"	3	5	8'2" to 10'1"
15"	18"	15'0" to 18'0"	4	6	10'2" to 12'1"
17"	21"	20'0"	5	7 or 8	12'2" to 14'1"

*SP 21" and 18" sections and the VP 24" and 28" sections in various configurations determine the number of sections and the section heights.

Special Conditions or Specifications can affect this schedule

OPENING PREPARATIONS

The inside face of the opening must be prepared with all members presenting a flush surface. All casings should be flush with each other and attaching bolts and nuts should be countersunk flush.



CRP23240106

WARRANTY:

First United Door Technologies warrants each garage door and component parts to be free from defects in material and workmanship to the original purchaser. A copy of this warranty is available upon request.